



Automotive Paint Defect Detection System



Innovative solutions for a
changing world



Benefits

50%
improvement in quality
after SMARTInspect
systems installed

33%
more throughput
capable compared
to competition

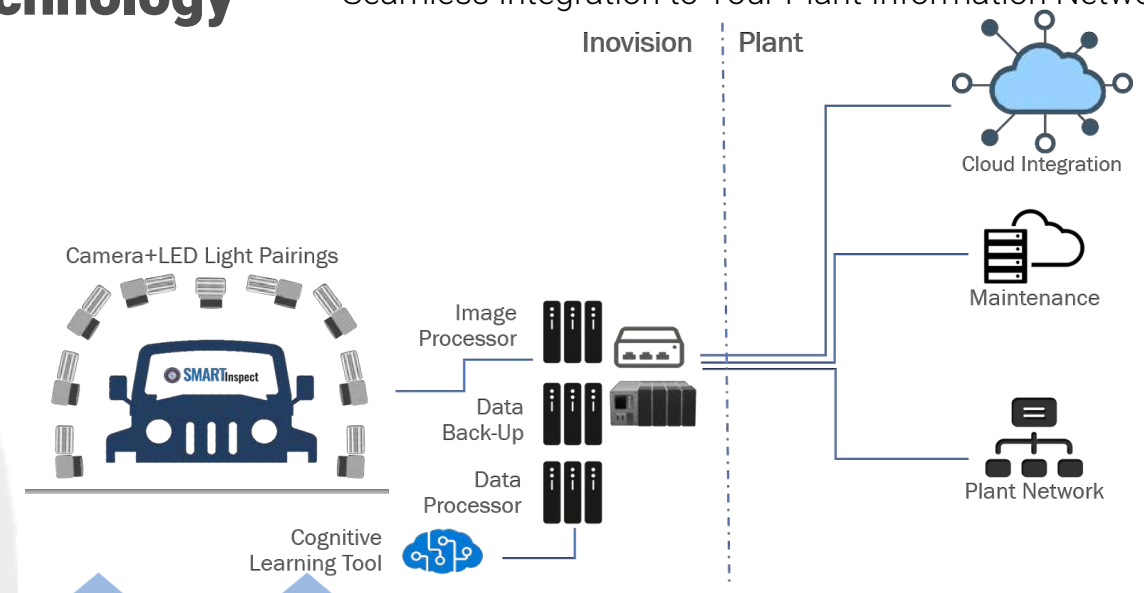
95%+
positive detection rate

**Reduced
operator fatigue
Focus on defect
repair**

Over \$1M+ Annual Savings from reduced
dealer warranty claims due to paint defects

IIoT Technology

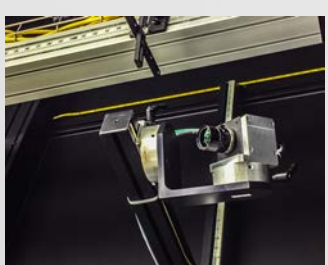
Seamless Integration to Your Plant Information Networks



Features



DYNAMIC MOVING LINE
Most automated inspection systems require the vehicle to stop and then be scanned. The SMARTInspect system scans, identifies, and classifies defects as the vehicle moves through the scan system, at the plant line speed.



OFF THE SHELF HARDWARE
The use of readily available equipment reduces overall costs and lead times on spare parts. It also means your maintenance techs don't need specialized training to maintain the mechanical hardware in the system.



FULLY ADJUSTABLE LOCKING BRACKETS
Each camera is mounted on a fully adjustable bracket that is designed to lock securely to ensure cameras maintain their position through the model life cycle. Once we set it, you can forget it.

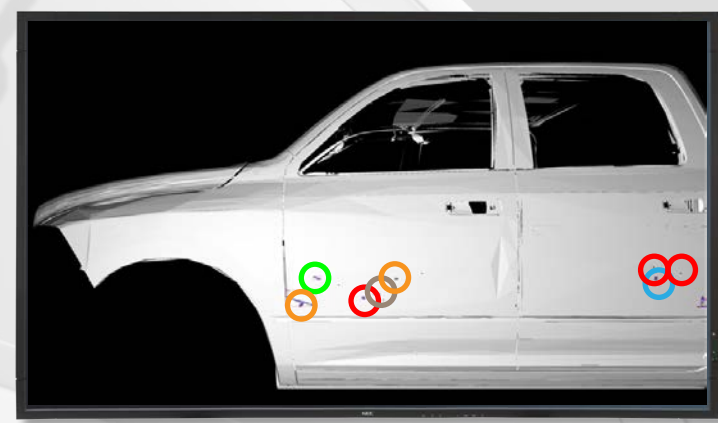
FASTSCAN

SCAN EVERY VEHICLE
Utilizing 6000 core processors allow for the best and fastest processing while maintaining the lowest price point.



AUTOMATIC MASKING
Special algorithms adaptively find edges and holes on the car body and automatically masks those areas right the surface edge. This means you get the COMPLETE surface scanned without having to manually adjust masks.

Automatic Detection + Classification

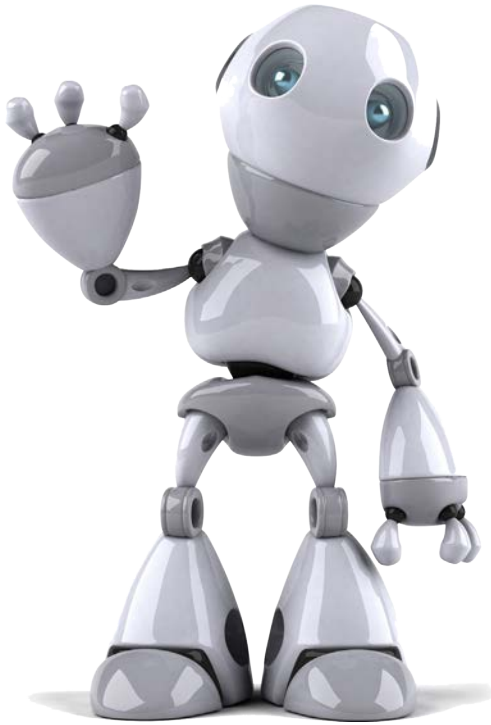


Detecting the defect is half the battle. Classifying the defect is the other. From Dirt to Orange Peel, the SMARTInspect system detects and classifies all standard defects reported in the Paint Shop.

Automatic Polish/Sand



SMARTInspect is ready to integrate to a robotic polishing and sanding station, where robots automatically polish areas with defects with vision guided robot paths.



Easy to business with. Period.

There are a lot of smart companies in the market place these days. Many of these companies have great technological solutions. We pride ourselves on being really easy-to-do-business with.

This is done through teamwork, innovation, integrity and a focus on project details. We work with you to design, develop and implement a solution that fits your company's requirements, all while answering your calls at all hours of the day and night, being there to serve you (especially when you need it most).

What We Offer:

- Turn-key Robotic Systems Integration
- Controls and Software Engineering Services
 - Allen Bradley Rockwell, Siemens, Mitsubishi, Omron, Wago, C/C++, C#, VB.NET, WPF, WCF, SQL, Java, J2EE, Python
- GUI and HMI development and onsite service
- Robot Programming Process Engineering
- Offline Robotic Simulations
- Expert level process knowledge in paint, sealing, and adhesive applications
- Robotic System Modular Build and System Testing
- Automation Readiness Audit (ARA) Service
- We come to site and provide you a report detailing costs, timelines and proposals for automating your process

We take customer service seriously. Because we serve these serious customers.

Ford	Chiyoda	Zeiss
FCA	Daimler Trucks	ABB
BMW	Toyoda Gosei	Magna
Mercedes	Nissan	ABC Inoac
Toyota	FANUC America	Fresenius
GM	Kawasaki Robotics	and more ...

Inovision Inc

2610 Bond St.
Rochest Hills, MI 48309
(248) 299-1915
contact@inovision.com

www.inovision.com



Innovative solutions for a
changing world

